

### Universal Body Shade



**4733 - Transcend UB Syringe 1pk**  
1 x 4 g syringe Universal Body shade

**4734 - Transcend UB Syringe 4pk**  
4 x 4 g syringes Universal Body shade



**4757 - Transcend UB Singles 1pk**  
10 x 0,2 g singles Universal Body shade

**4817 - Transcend UB Singles 4pk**  
40 x 0,2 g singles Universal Body shade

### Complementary Shades



**Transcend Syringe 1pk**  
4 g syringe

Dentin	1pk	Enamel	1pk
A1D	4727	EN	4731
A2D	4728	EW	4732
A3D	4729		
B1D	4730		



**Transcend Singles 1pk**  
10 x 0,2 g singles

Dentin	1pk	Enamel	1pk
A1D	4744	EN	4748
A2D	4745	EW	4749
A3D	4746		
B1D	4747		



**4726 - Transcend Syringe Intro Kit**  
1 x 4 g syringe of each shade:  
A1D, A2D, A3D, B1D, EN, EW, UB



**4814 - Transcend Singles Intro Kit**  
10 x 0,2 g singles of each shade:  
A1D, A2D, A3D, B1D, EN, EW, UB

Pair Composite Wetting Resin with any Ultradent composite to improve instrument and composite glide when sculpting and contouring.

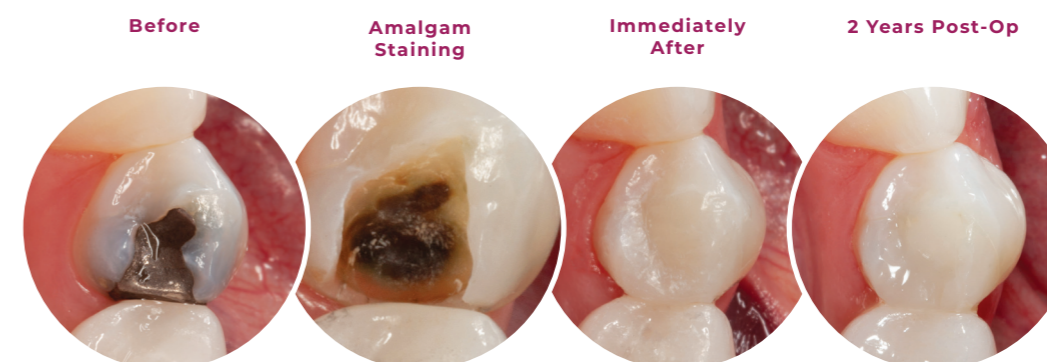


**3059 - Composite Wetting Resin Syringe 2pk**  
2 x 1,2 ml syringes

# TRANSCEND™ UNIVERSAL COMPOSITE

## Restorations with JUST ONE SHADE

Restoration with just one shade and without the use of a blocker



Courtesy of Dr. Jaleena Jessop.

Patient presented with recurrent decay on amalgam restoration on tooth #44. Tooth was restored using Transcend composite Universal Body shade. No opaquer was used as Transcend composite Universal Body shade had enough opacity to cover amalgam staining while blending in with the natural tooth color.

Follow Us!



eu.ultradent.blog

© 2024 Ultradent Products, Inc. All rights reserved.

UPP 760-EU 01-2024

ULTRADENT.EU



## Transcend™ Universal Composite

Transcend universal composite is an innovative dental composite material used for direct and indirect restorations in both the anterior and posterior regions. It provides unprecedented shade matching with just one Universal Body shade due to its patented Resin Particle Match™ technology that eliminates the need for a blocker or opaquer to hide darker underlying colors.

- Excellent mechanical and optical properties
- Ideal working consistency is easy to sculpt<sup>1</sup>
- High polishability<sup>1</sup>
- Fluoresces similarly to natural dentition<sup>1</sup>

Technical Overview <sup>1</sup>	
Volumetric Shrinkage	1,6%
Compressive Strength	450,7 (MPa)
Hardness	60,3 (HK)
Flexural Strength	156,17 (MPa)
Flexural Modulus	11,85 (GPa)
Radiopacity	3,2 (mm-Al)
Depth of Cure	2,85 (mm)
& Fill by Volume	60-61%
% Fill by Weight	79%

## Continually Matches SURROUNDING DENTITION

The following pictures of a tooth restored with Transcend composite show that the Universal Body shade has the capability of adjusting itself to continue to harmoniously match the surrounding dentition during the whitening process.



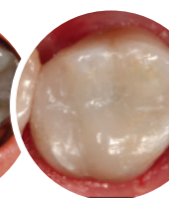
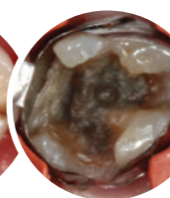
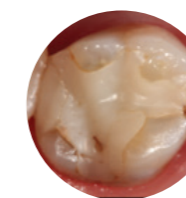
As a patient uses Opalescence™ teeth whitening, the restoration will continue to adapt to lighter shades.

## Direct Bonded Restorations

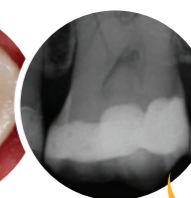
Patient presented with a failing composite restoration. Filling was removed, which revealed Amalgam staining and a mesial crack. The mesial crack was still a small, manageable size and therefore a direct bonded restoration could be done instead of an indirect crown restoration. Products used: Ultra-Etch™ etchant, and Peak™ Universal Bond adhesive. A very thin layer of A3 PermaFlo™ flowable composite was used for the initial layer. Transcend composite Universal Body shade was used to restore the tooth. Composite was adjusted according to occlusion and polished up beautifully.

Dr. Jaleena Fischer Jessop

Before

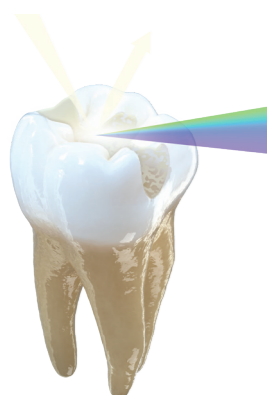


After



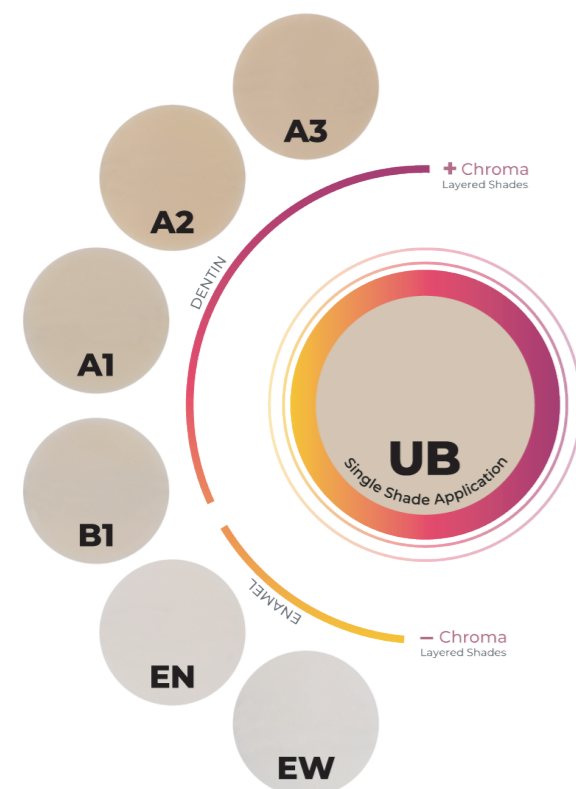
Radiopacity  
3,2 mm-Al

RESIN PARTICLE MATCH



## Revolutionary Dental COMPOSITE TECHNOLOGY

Transcend composite's nanohybrid formula has been designed with Ultradent's Resin Particle Match technology. The balanced refractive indices between resin and filler particles from that technology, combined with a carefully optimized tuning between translucency and opacity, allow Transcend composite to blend with most surrounding dentition with just one shade and without the use of a blocker.<sup>1</sup>



## Simply Beautiful Results FOR ANY RESTORATION

In addition to the Universal Body shade, Transcend composite also includes four dentin shades and two enamel shades for cases when a layering technique is appropriate.

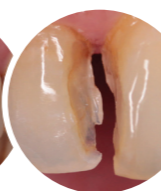
For the reconstruction of anterior teeth with a noticeable difference between cervical and incisal areas (opaque and translucent regions), and/or for larger restorations, such as occasional large Class III and IV cases that lack tooth structure from which the Universal Body shade draws shade from, beautiful outcomes can be achieved through the layering of the additional dentin and enamel shades.

## No Staining or Layering

Patient presented with discolored and defective distal buccal tooth color restoration on tooth #11 and mesial buccal on #12. Secondary caries beneath #12. Gingival recession caused the black triangle space seen. Defective restoration and caries were removed. Darker-yellowish dentin can be seen at the cervical area. Translucent enamel present. The preparation was etched and bonded per manufacturers' instructions, then Transcend composite Universal Body shade was placed to reduce interdental space. Transcend composite is able to mimic surrounding tooth color. No staining or layering was needed.

Dr. Adrian Goh

Before



After



## Lower Molar Efficiently Restored

Patient presented with failing composite restoration. Filling was removed. Both lower molars were efficiently restored using Transcend composite Universal Body Shade. Note the integration of the Transcend composite Universal Body shade and the tooth structure on the buccal wall of the first lower molar.

Dr. Rafael Beolchi

Before



After

